

Project Photos

BLA and IAA Response Action
Photos
RFAAP-NRU



Bag Loading Area
Building 404 prior to
removal action. October
2009.



IAA Building 8102-1
prior to removal action..
October 2009.



View of conductive
flooring material inside
BLA Building 404.
October 2009



View of conductive
flooring stains on
sidewalk at BLA
Building 405. October
2009.

Project Photos

BLA and IAA Response Action
Photos
RFAAP-NRU



Typical IAA building
prior to removal action.
August 2008.



Close-up view of
conductive flooring
material. August 2008.

Project Photos

BLA and IAA Response Action
Photos
RFAAP-NRU



View of IAA Building 1
from October 2009.



Winter Environmental
crew erecting asbestos
abatement enclosure at
Building 1. January 2011.

Project Photos

BLA and IAA Response Action
Photos
RFAAP-NRU



Asbestos abatement enclosure constructed around Building 522 during conductive flooring removal. February 2011.



Inside asbestos abatement enclosure during conductive flooring removal event. February 2011.

Project Photos

BLA and IAA Response Action
Photos
RFAAP-NRU



Asbestos abatement enclosure set up at BLA Building 404. February 2011.



Typical safety signs
erected within BLA and
IAA work areas. February
2011. .

Project Photos

BLA and IAA Response Action
Photos
RFAAP-NRU



View of typical air sampling (asbestos) cartridge used during abatement work. This sample location was inside the entrance/exit to a decontamination unit. January 2011.



Digital manometer used to demonstrate negative air pressure in asbestos containment during conductive flooring removal event. February 2011.

Project Photos

BLA and IAA Response Action
Photos
RFAAP-NRU



View of conductive flooring inside Building 404. January 2011.



View of above (Building 404) after conductive flooring removal. February 2011.

Project Photos

BLA and IAA Response Action
Photos
RFAAP-NRU



View of IAA Building
565B from August 2008.



View of IAA building
565B following
conductive flooring
removal. January 2011.

Project Photos

BLA and IAA Response Action
Photos
RFAAP-NRU



Conductive flooring
inside Building 8102-4.
August 2008.



View of above (Building
8102-4) following
conductive flooring
removal. February 2011.

Project Photos

BLA and IAA Response Action
Photos
RFAAP-NRU



View of IAA Building 1
from August 2008. most
of the conductive flooring
was buried underneath
soil and tree leaves.



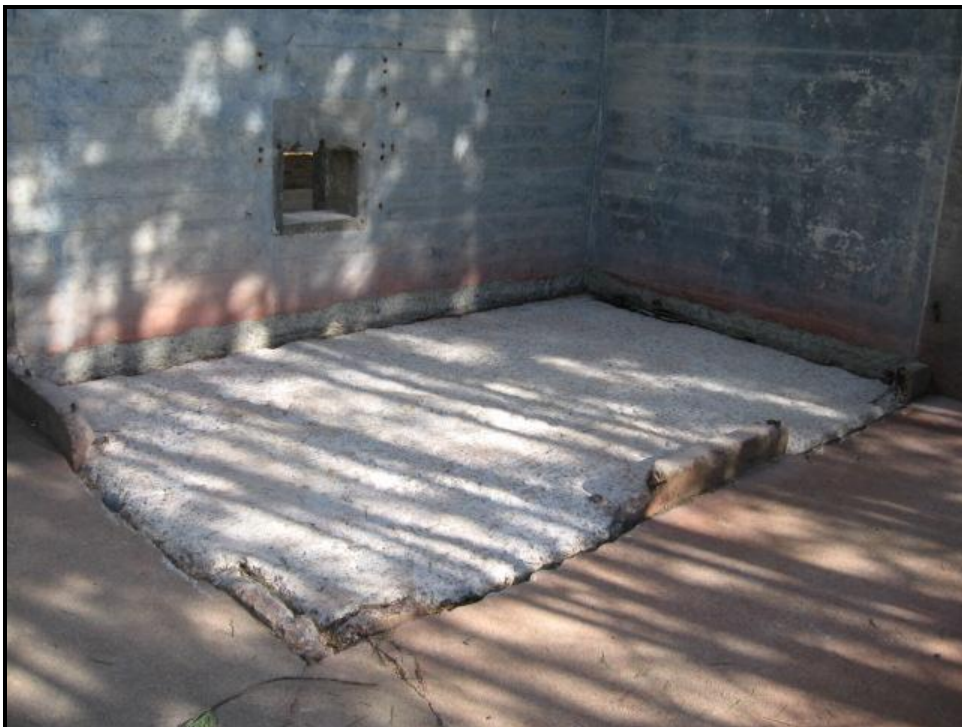
IAA Building 1 following
conductive flooring
removal. February 2011.

Project Photos

BLA and IAA Response Action
Photos
RFAAP-NRU



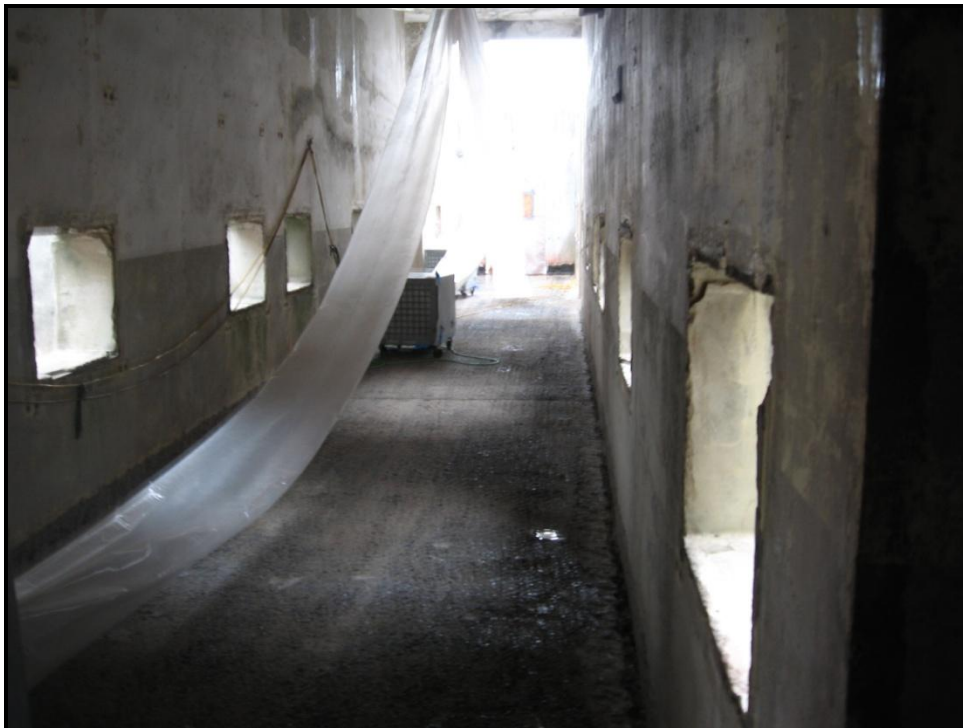
Typical IAA building section prior to conductive flooring removal. January 2011.



Typical IAA building section following conductive flooring removal. February 2011.

Project Photos

BLA and IAA Response Action
Photos
RFAAP-NRU



View inside BLA
Building 405 following
conductive flooring
removal. March 2011.



View of second story
floor in BLA Building
405 following conductive
flooring removal. March
2011.

Project Photos

BLA and IAA Response Action
Photos
RFAAP-NRU



Asbestos containment unit set up at BLA Building 412. March 2011.



Completed conductive flooring removal at BLA Building 412. March 2011.

Project Photos

BLA and IAA Response Action
Photos
RFAAP-NRU



Specialized equipment used for conductive flooring removal at BLA Buildings. February 2011.



Vacuum truck and collection tank used to support conductive flooring removal equipment at the BLA. March 2011.

Project Photos

BLA and IAA Response Action
Photos
RFAAP-NRU



View of excavation at
IAA Building 565.
March 2011.



View of excavation at
IAA Building 8102-3.
March 2011.

Project Photos

BLA and IAA Response Action
Photos
RFAAP-NRU



View of completed
excavation for Aroclor
1254 action area at IAA.
March 2011.



View of excavation
activities at BLA
Building 405. March
2011.

Project Photos

BLA and IAA Response Action
Photos
RFAAP-NRU



All conductive flooring waste was placed in double-lined and labeled asbestos disposal bags.



All soil was placed in double lined and covered roll-off boxes.